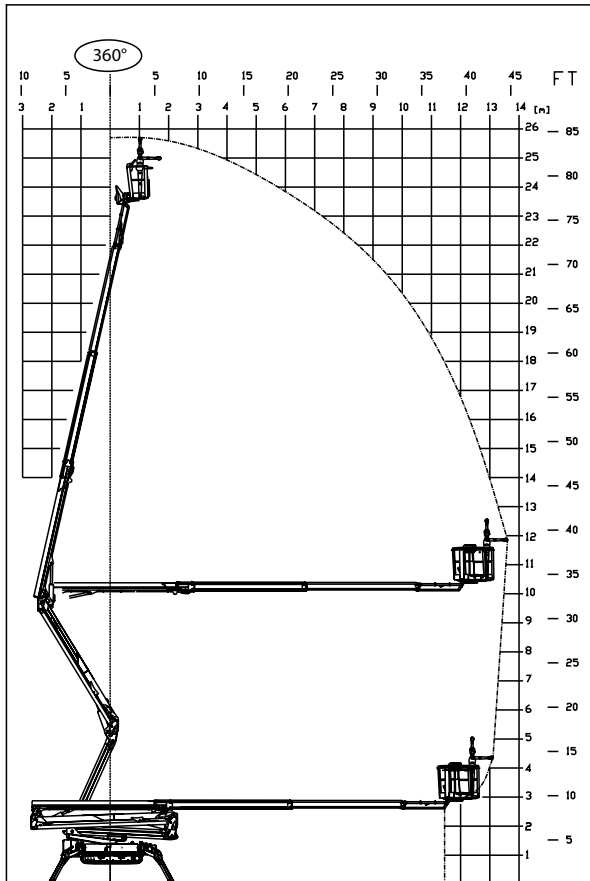
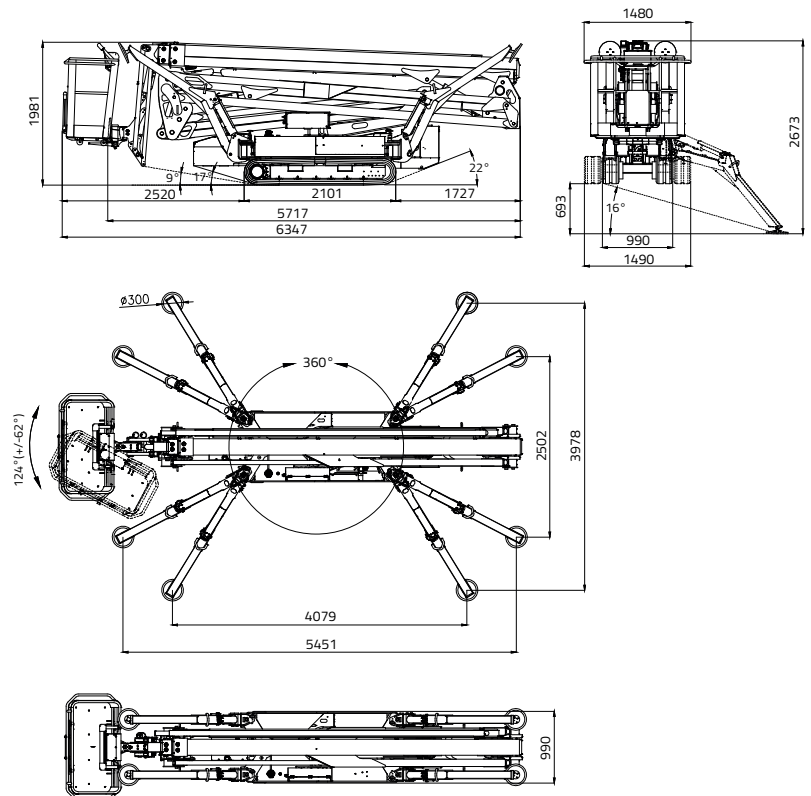


LL26.14



CAPACITY 230 kg
(2 persons 80x2=160 kg + tool box 70 kg)



25,70 m



13,75 m



6,34 m



5,70 m



1,98 m



1.335 x 690 x h 1.100 mm



124° (+/-62°)



16° / 28,7%



990 / 1.490 mm



3.124 daN - 4,42 daN/cm²



Variable stabilization area
4.079 x 3.978 mm (5.451 x 2.502 mm)



Automatic set up system IIIS std



Remote control



GPRS-GPS



R.A.H.M.



DIESEL ENGINE

BrandKUBOTA
TypeD902 Autorev
Pistons no. and displacement.....898 cm³
Max. gross power
..... 21,6 HP - 16,1 kW @3200rpm
Electrical start..... 12 volt

LITHIUM-ION ENGINE

Battery..... 100 Ah
Electric motor:
- rated voltage..... 76 V
- rated power..... 3,5 kW
Onboard battery charger.... 110V-230V+-30V 50-60 Hz
Autonomy (continuous cycle)*4-5 h
Recharge time on flat batteries
..... 4 h (indicative)
Recharge time to 80% on flat batteries.....
..... 2 h (indicative)
* (Autonomy measured with Hinowa H1 operating cycle)

HYDRAULIC PUMPS

Electric motor no.2 gear pumps

TRACKED UNDERCARRIAGE

Track tensioner grease-filled
Rollers no. per side 6 + slide
Widening system.....990 / 1490 mm
Translation speed with 2nd auto2speed:
- diesel engine 1,1 - 2 km/h
- lithium-ion engine..... 0,7 - 1,2 km/h

WEIGHT MACHINE4540 kg
MAX UPPER SLANT 16° / 28,7 %
MAX WIND SPEED 12,5 m/s